



GUARD-LEE INC.

AERO SPACE DIVISION

PHONE 407-886-7112
FAX 407-886-3819

1723 BENBOW COURT, APOPKA, FLORIDA 32703 USA

August 25, 1997

Mr. Steve Fox
Beyel Bros.
4505 Pinecone Place
Cocoa, FL 32926

Dear Mr. Fox:

I would like to thank you and all the folks at Beyel Bros. that made the shuttle main tank installation a spectacular success. In particular Phil who continually was a source of reassurance and cautious planning and Danny, a super technician, thru his initiative and get the job done attitude was most helpful. Let us not forget the super heroes, the crane operators who skillfully maneuvered that huge tank in place under some very exacting circumstances. I am sure your team took some great photos, however, I too took some exciting photos of moments bordering on cold sweat and in sequential order. I thought you might find them interesting or maybe helpful for future promotion. Here's hoping we can work successfully again in the near future.

Sincerely,

Ed Guard
President

Note: I also sent a set to Mr. Rick Abramson, Director of DNPS.



1

Restoration complete by Guard Lee. Lifting preparation starting Friday, June 27, 1997 Kennedy Space Center Shuttle Park



2

Restoration complete. Lifting preparation Friday, June 27, 1997. Had to stop proceedings due to lightning storm.



3

We have lift off from cradle! Saturday, June 28, 1997 about 2:00 p.m.



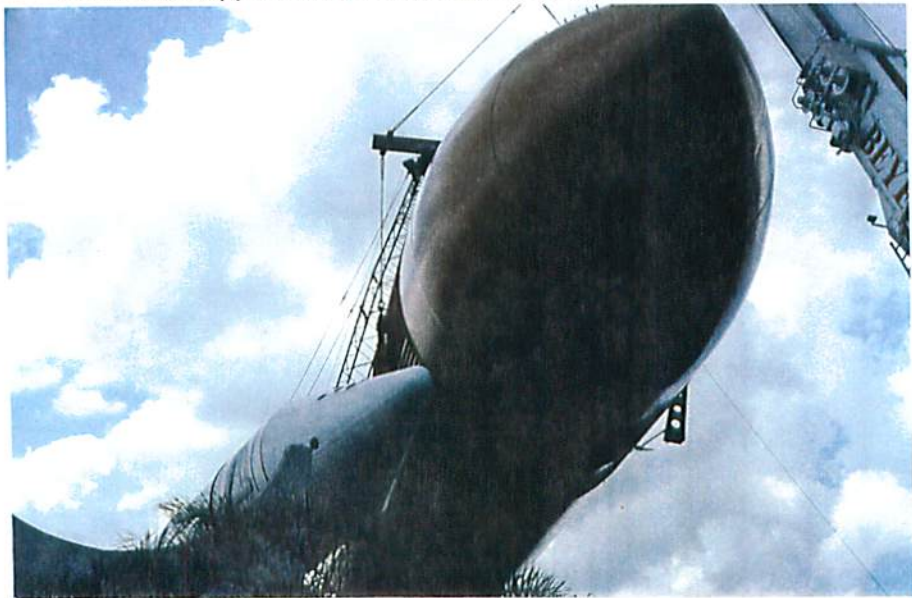
4

Going up - - carefully



5

Tank nose approaching front crane boom, tricky maneuvering.



6

Tricky maneuvering under boom, closing very close to the shuttle rocket. Excellent crane work by Beyel Bros.

3



Up and angling for lift over rocket.

Wind and storm approaching.

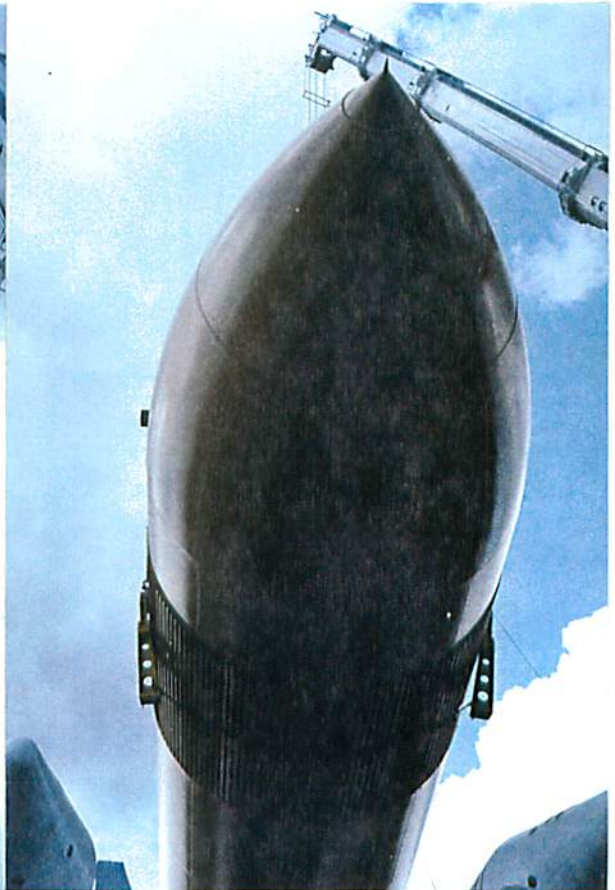
7

8

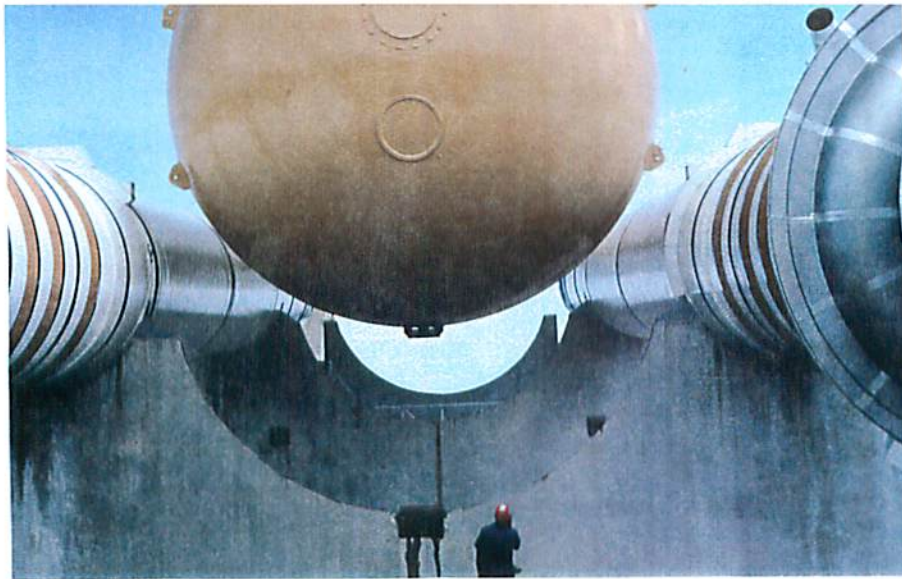


Up and almost over the port side of rocket.

9

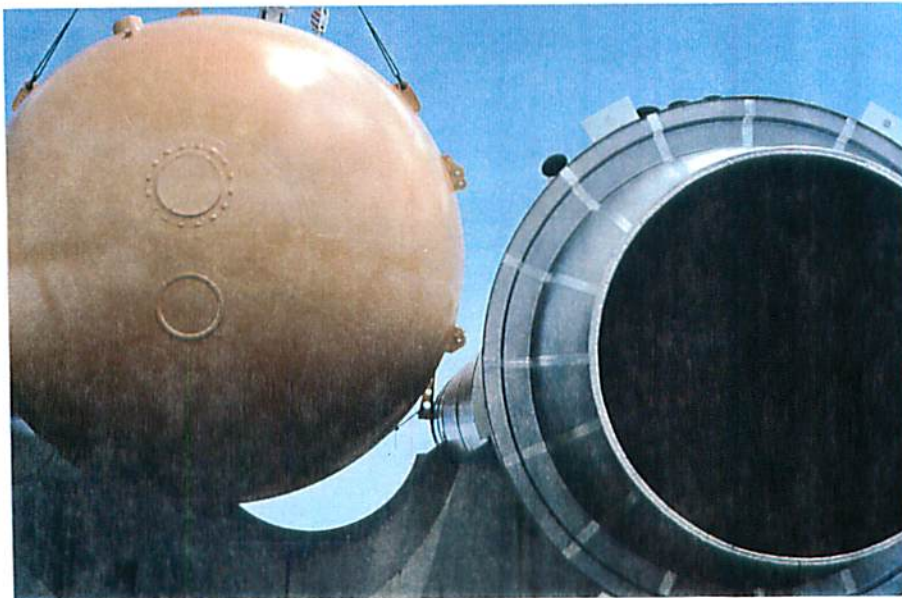


Over the rocket and straightened out for decent between the rockets. Wind and approaching storm not helping.



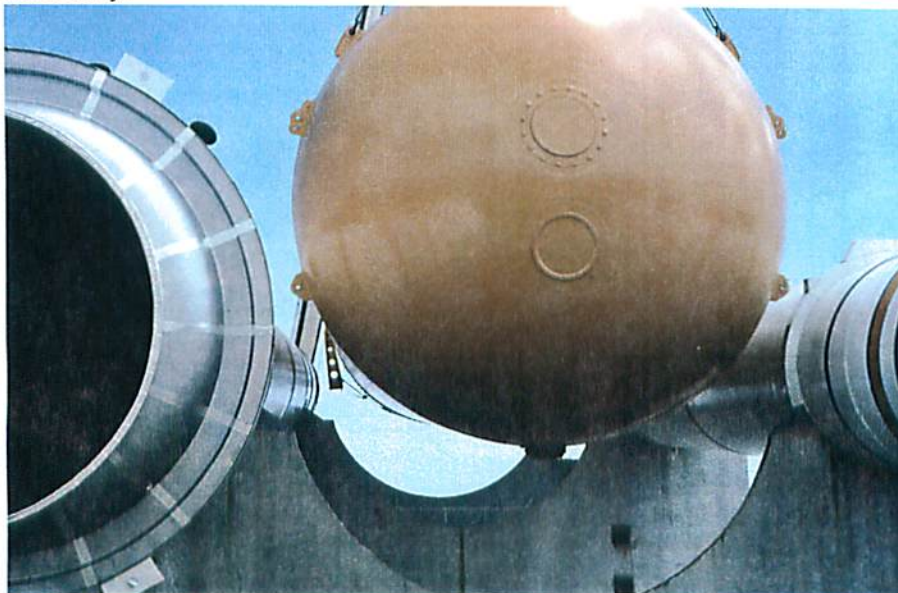
10

Rear of tank descending on the centerline of the aft steel cradle pad.



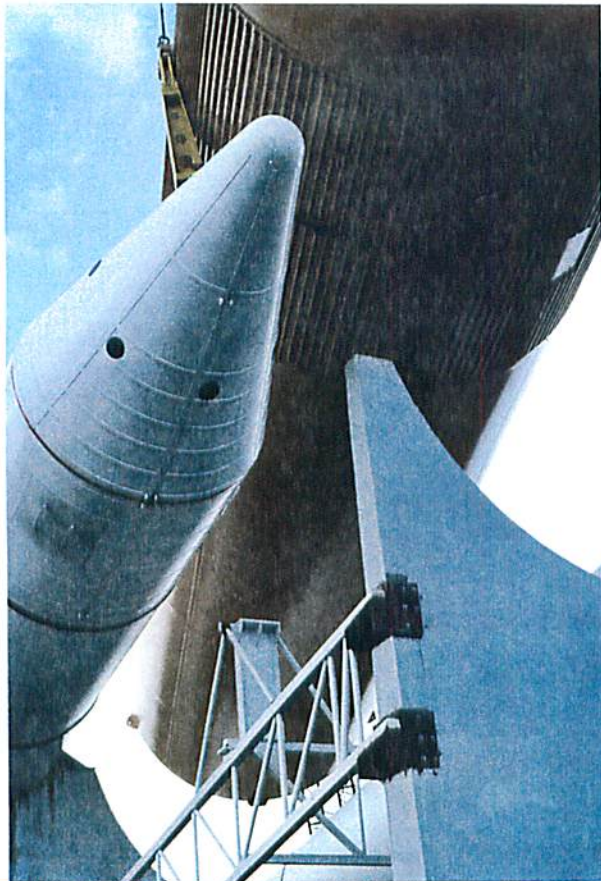
11

Wind giving us a bit of concern on final descent. Tank pick up strut about to enter rocket shell. A window was pre-cut in each for this necessity.



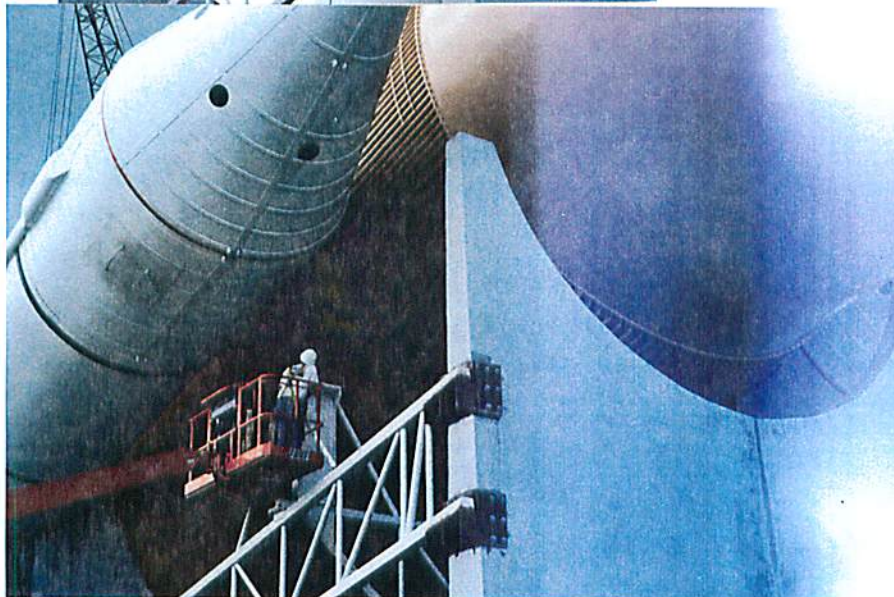
12

Another wind sway during the final downward tank movement. Handled beautifully by the Beyel Bros. crane operators.



Coming in for a landing, very carefully with only 5" to space total. Installation complete 7:00 p.m. June 28, 1997. Congratulations abound.

13



Tom directing the tank structural pick up onto the cradle steel mating structure.

14



15

Just about structurally mated as the storm is about to break.



16

Inches to go before welding in place and everyone jumping with joy as the final rain drops came.



17

Tom Wilkes from Guard Lee looking over the scene and descending from a job well done! Storm brewing.



18

Tank welded in place. Thumbs up and congratulations with all involved at approximately 7:00 p.m. A great lightning storm followed.